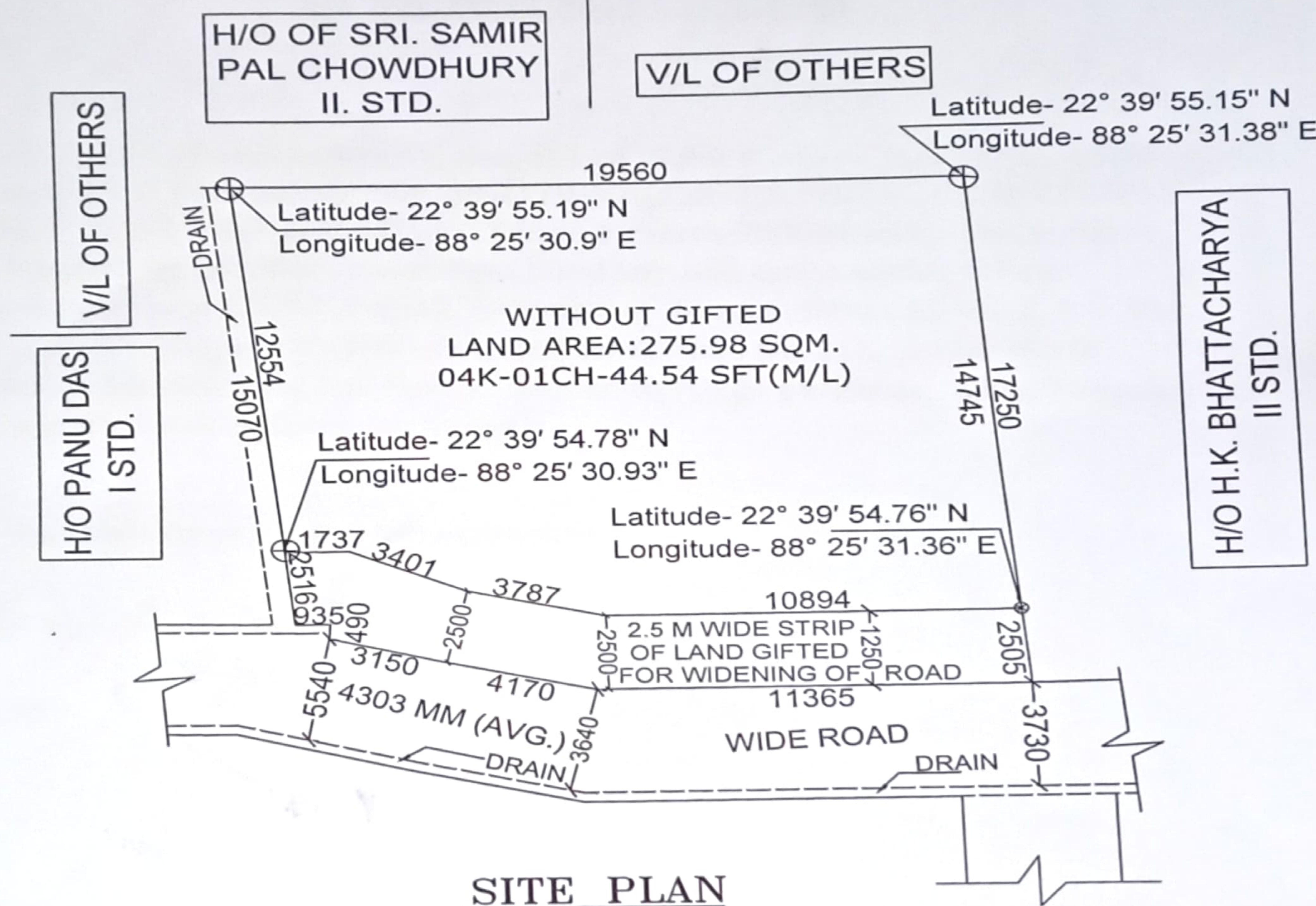
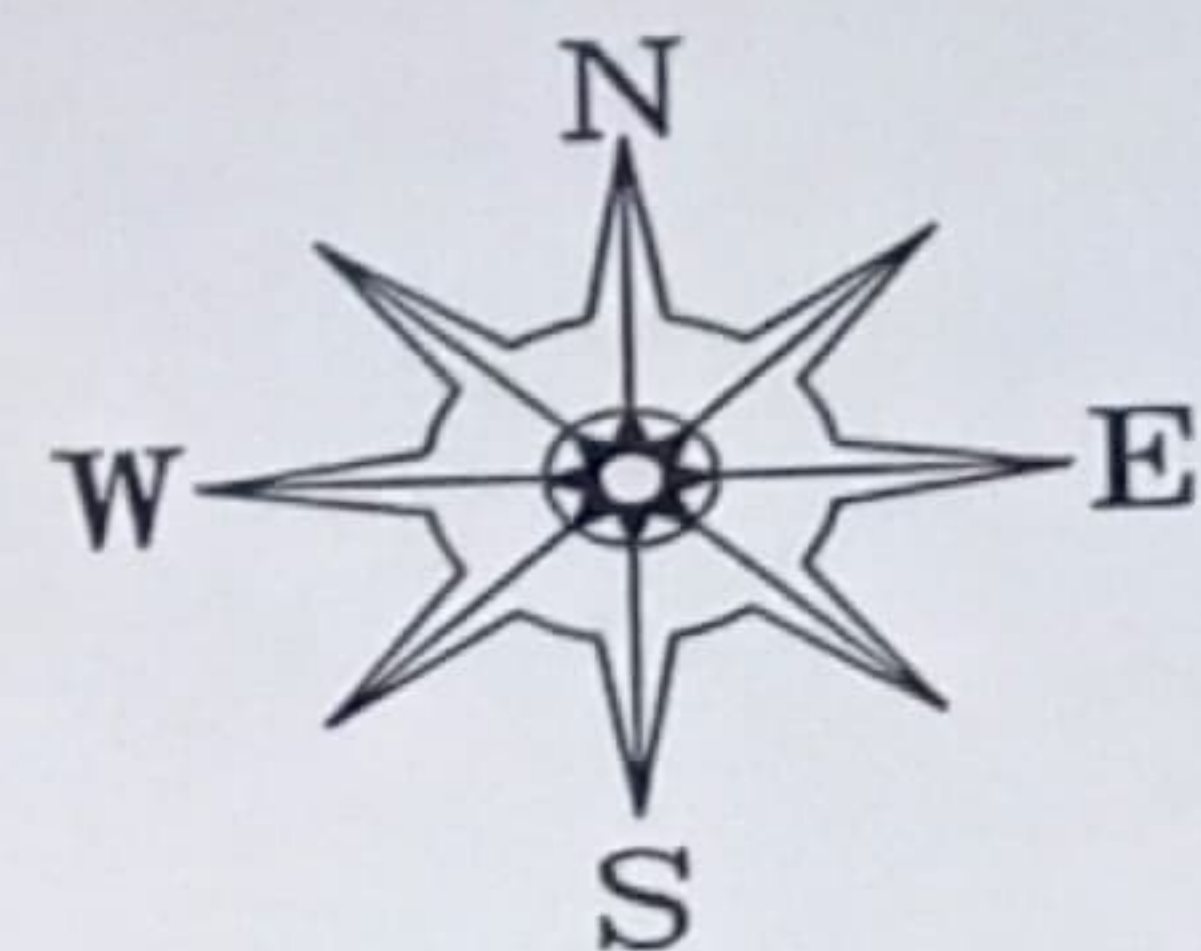
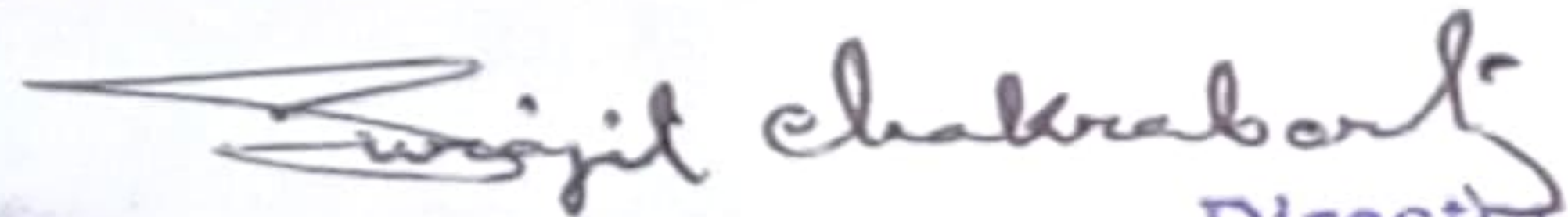


SITE PLAN OF LAND SITUATED AT MOUZA-BIRATI, J.L NO-07 R.S NO-139, TOUZI NO-172, R.S AND L.R DAG NO-119, R.S KHATIAN NO-345, MOD. KHATIAN NO -211, L.R. KHATIAN NO-385, HOLDING NO- 16(33), S.N. ROY CHOWDHURY SARANI, WARD NO-13, P.S-NIMTA, UNDER NORTH DUM DUM MUNICIPALITY, DIST- 24PGS (N).



SITE PLAN
SCALE = 1:100

SWAPNO DEVELOPERS PRIVATE LIMITED

 Director

DRAWN BY